

Mercury BASE

Designed to scale with your organization



Finishes shown in Carlsbad color scheme with Galvanize fabric.

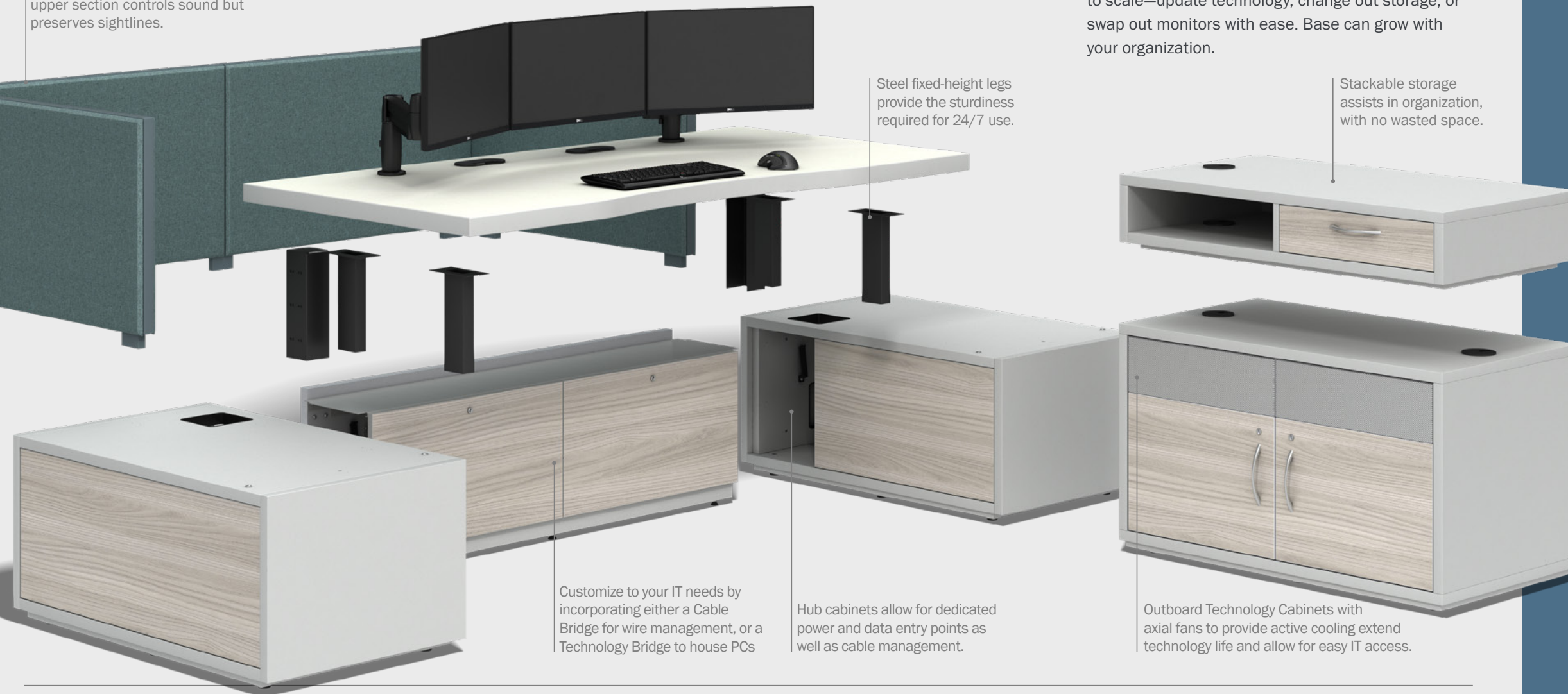
watsonconsoles



High Performance without High Cost

Crafted with the same durable materials, developed by the same team with 35 years of experience, and backed by the same Lifetime +10 Warranty that distinguishes Watson Consoles from every other offering in the market.

Tackable privacy screens create functional privacy. Available acrylic upper section controls sound but preserves sightlines.



Steel fixed-height legs provide the sturdiness required for 24/7 use.

Designed to scale:

Technology changes. Agencies change. Base is built to scale—update technology, change out storage, or swap out monitors with ease. Base can grow with your organization.

Stackable storage assists in organization, with no wasted space.

Customize to your IT needs by incorporating either a Cable Bridge for wire management, or a Technology Bridge to house PCs

Hub cabinets allow for dedicated power and data entry points as well as cable management.

Outboard Technology Cabinets with axial fans to provide active cooling extend technology life and allow for easy IT access.

Mercury BASE

at a glance

Size Ranges:

Worksurface width: 60"-96"

Hub depth: 39"

Screen heights: 36"-60"

Adjustability:

Monitor capacity: Up to ten 24" monitors

Row 1 monitor arms focal depth: 20.5" extension

Row 1 monitor arms focal height: 8.5" above surface +/- 7" height adjustment

Row 2 monitor arms focal depth: 20.5" extension

Row 2 monitor arms focal height: 21.5" above surface +/- 7" height adjustment

Environment Controls:

Available as an add-on accessory.

Screening:

Tackable

12" acrylic toppers: Optional

Technology:

Standard PC max capacity: 12

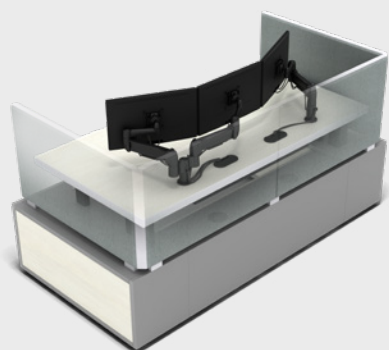
Rack mount ready: Optional in Technology Cabinets

User accessible plug-ins: Up to 4 outlets optional

110V AC NEMA 5-15R receptacles: Two 10-outlet PDUs provided per console.

Monitor Arms

Personalize each workstation with Watson's monitor arms. The independent arms can be arranged in a multitude of ways to match your needs. Mix and match to achieve one and two row arrays, or a combination of both. End users can adjust the height and depth to their individual needs to enhance their performance and create a comfortable environment.



Cable Management

Manage wires with the efficiency that has become a hallmark of Watson Consoles. The surface mounted shroud is inconspicuous, easy to access, and has the same capacity as the larger Mercury models. It cleanly bundles the wiring, routing it from the array to the worksurface to the tech hub while keeping everything organized and convenient.

26246 Twelve Trees Lane NW, Poulsbo, WA 98370
tel 360.394.1300 watsonconsoles.com

watsonconsoles

Practical. Reliable. Adaptable.



Finishes shown
in Arches color
scheme.

Practical: Mercury Base provides the full technological capacity and worksurface space of other consoles at a fraction of the cost.

Reliable: Made with industry-best materials, this console is built to withstand 24/7 use.

Adaptable: Mercury Base can be adjusted and customized as your technology and staffing needs change



watsonconsoles

26246 Twelve Trees Lane NW, Poulsbo, WA 98370
tel 360.394.1300 watsonconsoles.com